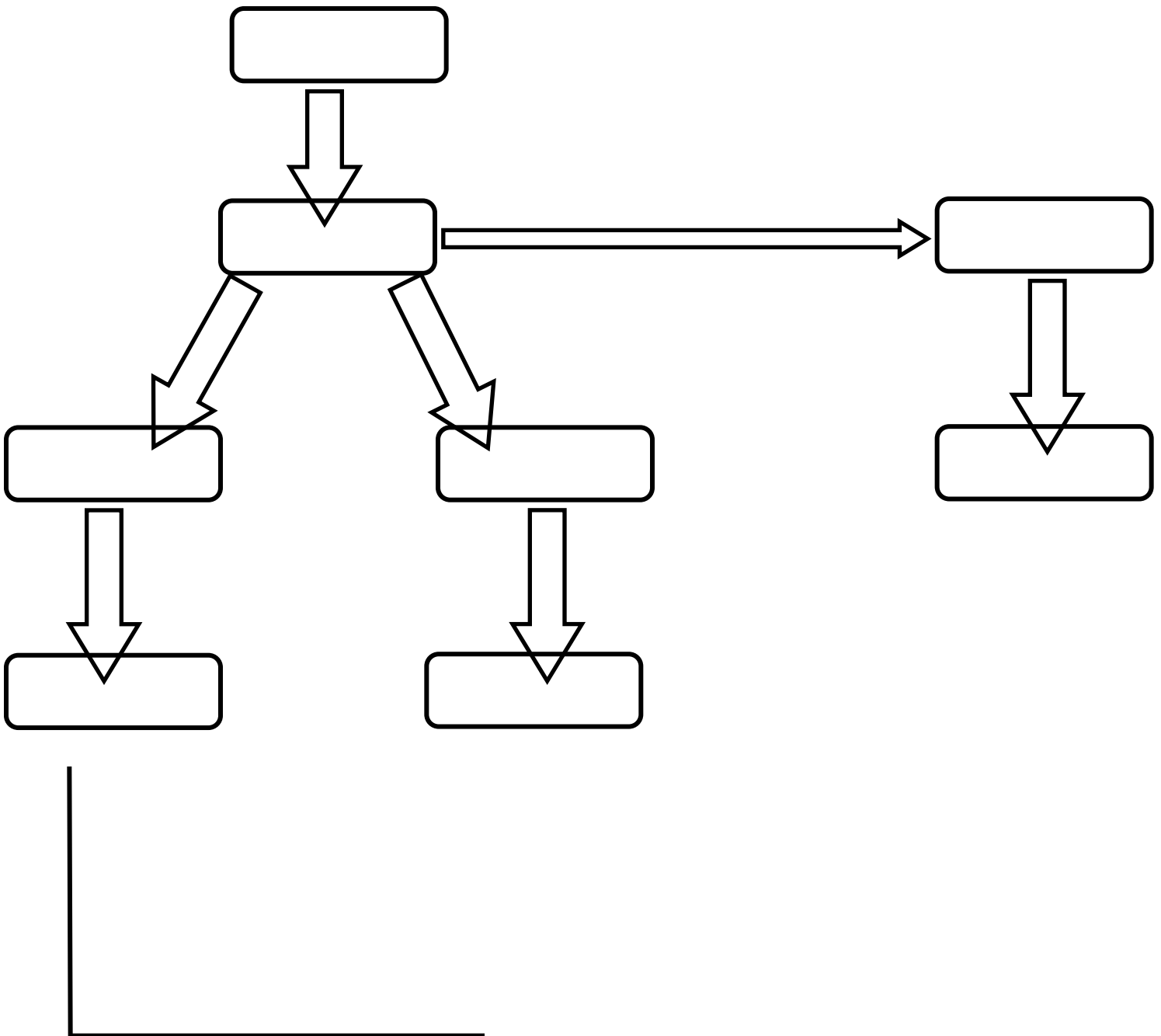


1. The term "Therm" in endothermic and exothermic reactions means _____.
2. Define the terms "system" and "surroundings".
3. In a cold pack what two chemicals react to produce the endothermic reaction AND where does the system get the heat from?
4. Complete the diagram below.



5. Balance the exothermic reaction referred to as a thermite reaction.



6. Complete the graphs below to show the change in energy as a chemical reaction proceeds.

Exothermic Reaction



Endothermic Reaction



7. The most practical (done in the lab) activity to perform to determine if a reaction is endothermic or exothermic is to:

8. Was that helpful?